



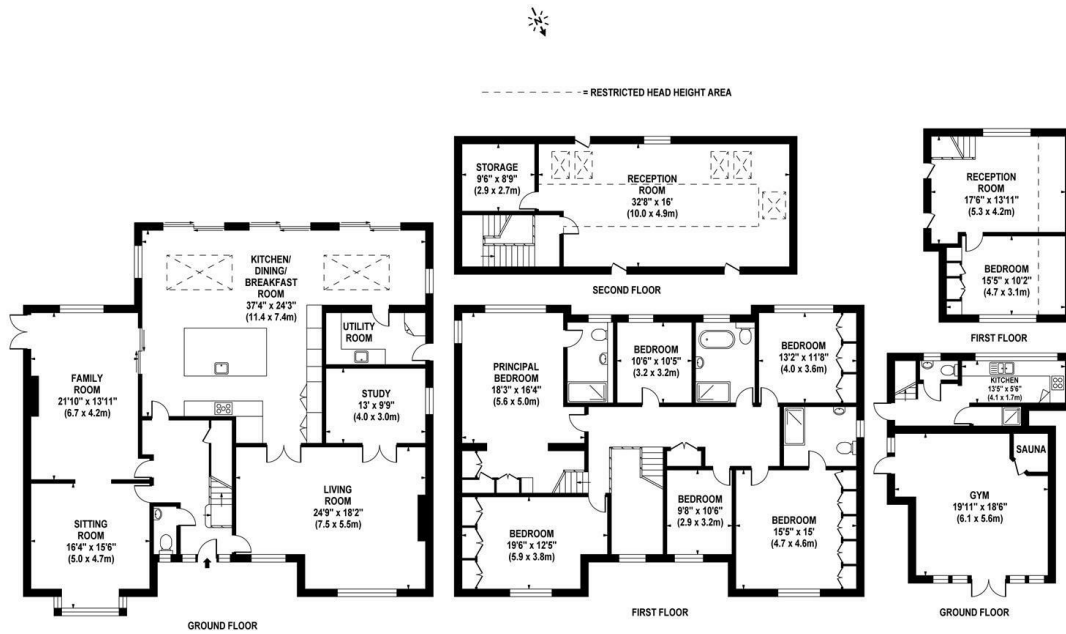
Howard Morley
& Sons

PER MONTH

£9,750 Per Month

Waterhouse Lane

Tadworth, KT20 6HU



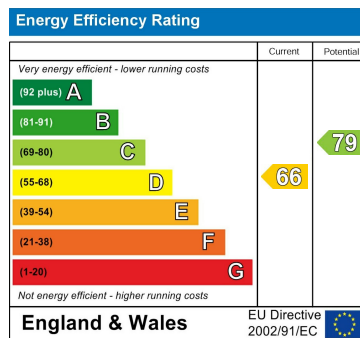
APPROX. GROSS INTERNAL FLOOR AREA 4594 SQ FT / 427 SQ M (MAIN HOUSE)
 APPROX. GROSS INTERNAL FLOOR AREA 918 SQ FT / 85 SQ M (OUTBUILDING)
 APPROX. GROSS INTERNAL FLOOR AREA 5512 SQ FT / 512 SQ M (TOTAL) (INCLUDING RESTRICTED HEAD HEIGHT AREA)

These floor plans are for guidance only and should not be used for any other purpose. The measurements are approximate and are for general guidance purposes only. The measurements are for information only and should not be used for any other purpose. The measurements are for information only and should not be used for any other purpose. The measurements are for information only and should not be used for any other purpose.

7 |

4 |

6 |



Agents Note: Whilst every care has been taken to prepare these particulars, they are for guidance purposes only. All measurements are approximate and are for general guidance purposes only and whilst every care has been taken to ensure their accuracy, they should not be relied upon and potential buyers/tenants are advised to recheck the measurements

	OFFICE ADDRESS 276 High Street Guildford Surrey GU1 3JL	OFFICE DETAILS 01483 575 304 lettings@hmorley.co.uk hmorley.co.uk
--	--	---